

Java 2 Micro Edition



Using NetBeans 6.9

Requirements

- NetBeans IDE 6.9 **Java** or **All** edition (download) comes with a wireless toolkit inside (SDK 3.0).

<http://www.netbeans.org/downloads/index.html>

NetBeans IDE 6.9.1 Download

6.9.1 | [Development](#) | [Archive](#)

Email address (optional):

Subscribe to newsletters: Monthly Weekly

NetBeans can contact me at this address

IDE Language: Platform:

Note: Greyed out technologies are not supported for this platform.

NetBeans IDE Download Bundles

Supported technologies *	Java SE	JavaFX	Java	Ruby	C/C++	PHP	All
NetBeans Platform SDK	•	•	•				•
Java SE	•	•	•				•
JavaFX		•					•
Java Web and EE			•				•
Java ME			•				•
Java Card™ 3 Connected			—				—
Ruby				•			•
C/C++					•		•
Groovy			•				•
PHP						•	•
Bundled servers							
GlassFish Server Open Source Edition 3.0.1			•	•			•
Apache Tomcat 6.0.26			•				•

Download buttons and sizes:

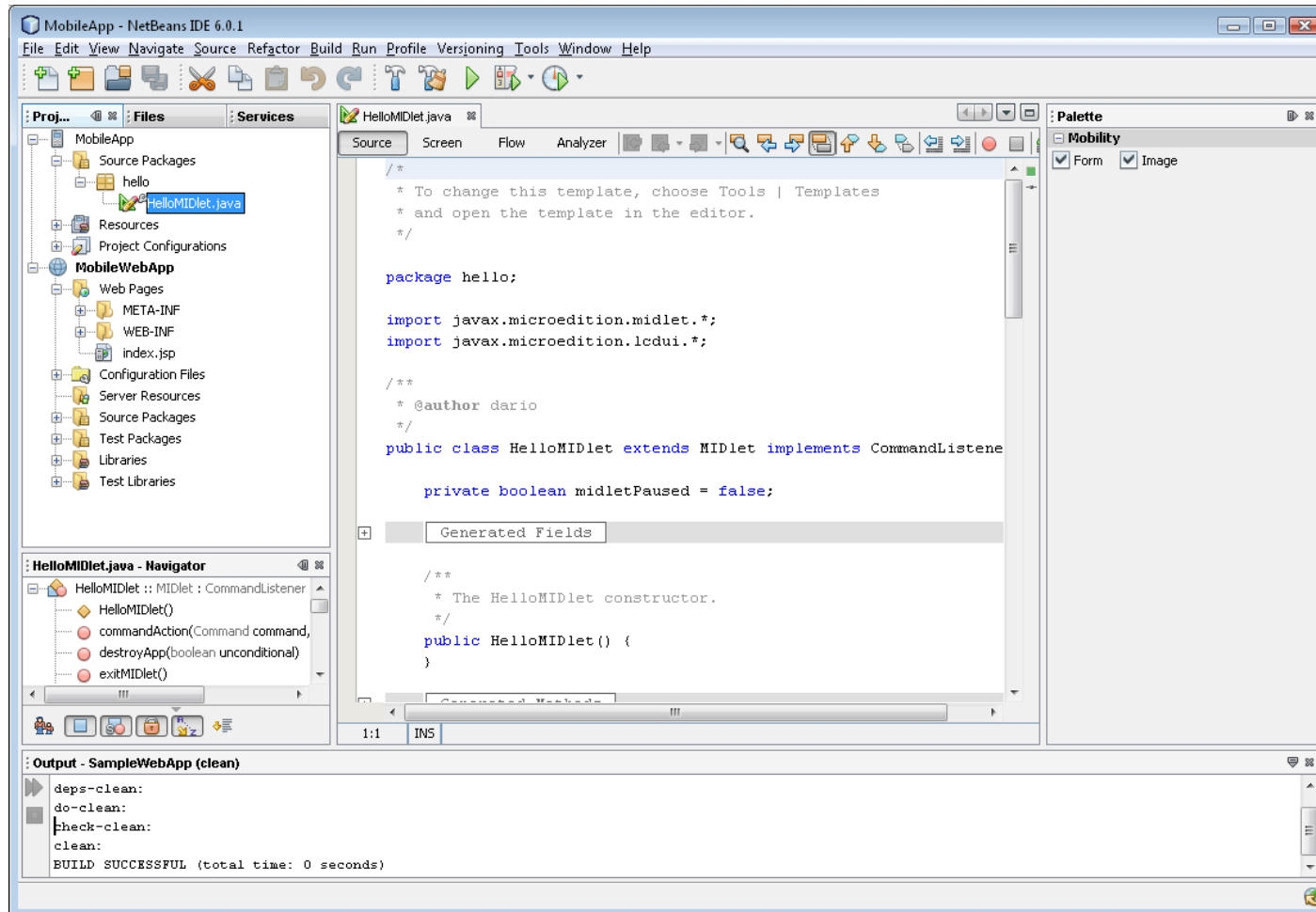
- Download (Free, 52 MB)
- Download (Free, 125 MB)
- Download (Free, 178 MB)
- Download (Free, 85 MB)
- Download (Free, 33 MB)
- Download (Free, 28 MB)
- Download (Free, 282 MB)

NetBeans – Mobile & Web

- ▣ You can use just NetBeans to create Mobile and Web applications. It comes with Tomcat 6.x.

MIDP

Web



MIDP Using the Source Editor

- There are different way to start with the source editor
 - Using the Wizard (here described)
 - Import from existing source code (try yourself)

MIDP Using the Source Editor (1)

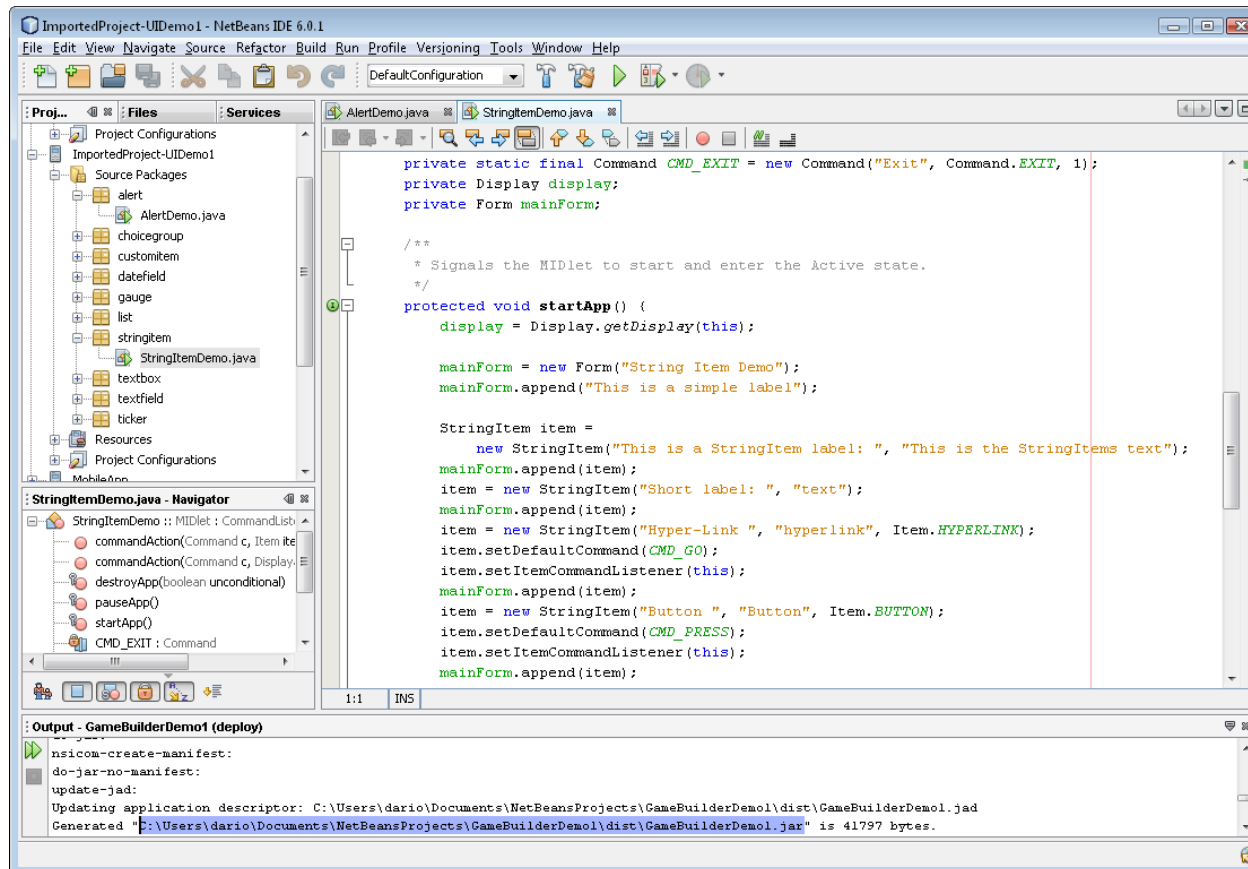
- ❑ Choose File > New Project (Ctrl-Shift-N)
- ❑ Under Categories, select Mobility
- ❑ Under Projects, select Mobile Application
- ❑ Enter HelloSuite in the Project Name field
- ❑ Change the Project Location to any directory on your system
- ❑ We refer to this directory as \$PROJECTHOME in this tutorial
- ❑ Check the Set as Main Project checkbox and **remove** the check from the Create Hello MIDlet checkbox.
- ❑ Next select the Emulator Platform
- ❑ Then click on the "Finish" button

MIDP Using the Source Editor (2)

- ❑ The IDE creates the \$PROJECTHOME/HelloMIDlet project folder
- ❑ The project folder contains all of your sources and project metadata, such as the project Ant script
- ❑ Right-click the MyHelloMIDlet node in the Explorer window and choose New > MIDlet
- ❑ Enter HelloMIDlet as the MIDlet name (note that "MID" is in upper case letters)
- ❑ Click Finish, the HelloMIDlet.java file is created.

MIDP Using the Source Editor (3)

- ❑ Double click the HelloMIDlet.java file to display the source code in the Editor
- ❑ Click in the Source Editor and change the code.



MIDP Using the Source Editor (4)

- ❑ Choose Run > Run Main Project (F6) from the Run menu
- ❑ Follow the progress of the project compilation in the Output window
- ❑ Note that the HelloMIDlet.java file is built before it is executed
- ❑ A device emulator opens to display the results of the executed MIDlet
- ❑ The default device emulator is DefaultColorPhone
- ❑ In the device emulator window, click on the button below the Launch command.

Add another MIDlet

- ❑ Try adding the HitMIDlet (work as before)
- ❑ You must add an application description: the url to connect to
- ❑ Right click on the project and select the "properties"
- ❑ Click on "Application Descriptor"
- ❑ Add the new property "HitMIDlet.URL" with value "http://localhost:8080/midp/hits" (or whatever is the url of the servlet)
- ❑ Take care that this property is added to the JAD (only!)
- ❑ Run the new project and launch the new midlet.