

# Java 2 Micro Edition



Using NetBeans 6.7

# Requirements

- NetBeans IDE 6.7.1 **Java** or **All** edition (download) comes with a wireless toolkit inside (SDK 3.0).

<http://www.netbeans.org/downloads/index.html>

NetBeans IDE 6.7.1 Download 6.7.1 | [6.8 M1](#) | [Python EA2](#) | [Development](#) | [Archive](#)

Email address (optional):

Subscribe to newsletters:  Monthly  Weekly

NetBeans can contact me at this address

IDE Language:  Platform:

---

**NetBeans IDE Download Bundles**

Supported technologies *	Java SE	JavaFX	Java	Ruby	C/C++	PHP	All
Java SE	•	•	•				•
JavaFX		•					•
Java Web and EE			•				•
Java ME			•				•
Ruby				•			•
C/C++					•		•
Groovy			•				•
PHP						•	•
Bundled servers							
Sun GlassFish Enterprise Server v2.1			•				•
Sun GlassFish Enterprise Server v3 Prelude			•	•			•
Apache Tomcat 6.0.18			•				•

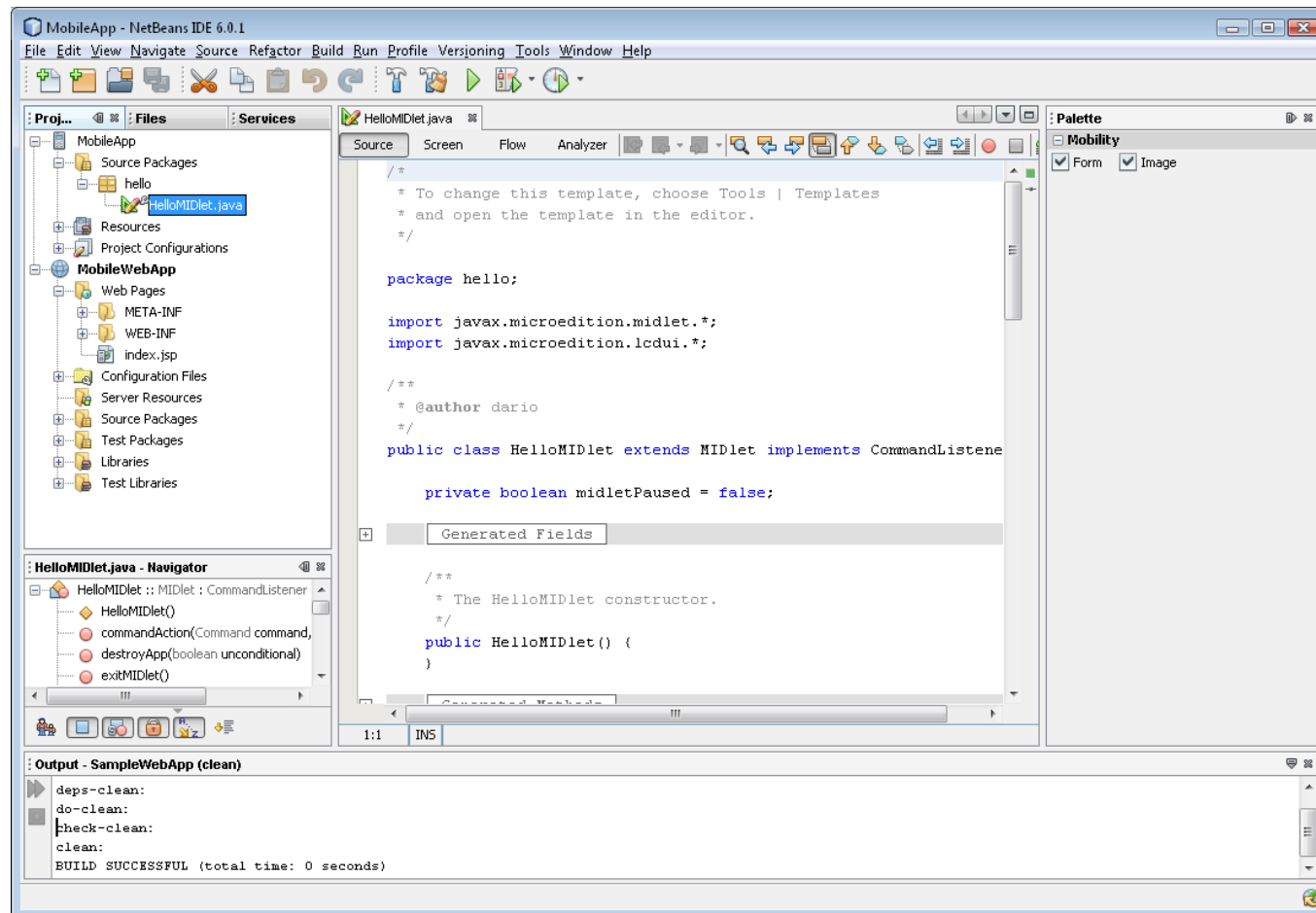
<a href="#">Download</a>	<a href="#">Download</a>	<a href="#">Download</a>	<a href="#">Download</a>	<a href="#">Download</a>	<a href="#">Download</a>	<a href="#">Download</a>	<a href="#">Download</a>
Free, 47 MB	Free, 90 MB	Free, 238 MB	Free, 59 MB	Free, 30 MB	Free, 26 MB	Free, 302 MB	

# NetBeans – Mobile & Web

- You can use just NetBeans to create Mobile and Web applications. It comes with Tomcat 6.x.

MIDP

Web



# MIDP Using the Source Editor

---

- There are different way to start with the source editor
  - Using the Wizard (here described)
  - Import from existing source code (try yourself)

# MIDP Using the Source Editor (1)

---

- ❑ Choose File > New Project (Ctrl-Shift-N)
- ❑ Under Categories, select Mobility
- ❑ Under Projects, select Mobile Application
- ❑ Enter HelloSuite in the Project Name field
- ❑ Change the Project Location to any directory on your system
- ❑ We refer to this directory as \$PROJECTHOME in this tutorial
- ❑ Check the Set as Main Project checkbox and **remove** the check from the Create Hello MIDlet checkbox.
- ❑ Next select the Emulator Platform
- ❑ Then click on the "Finish" button

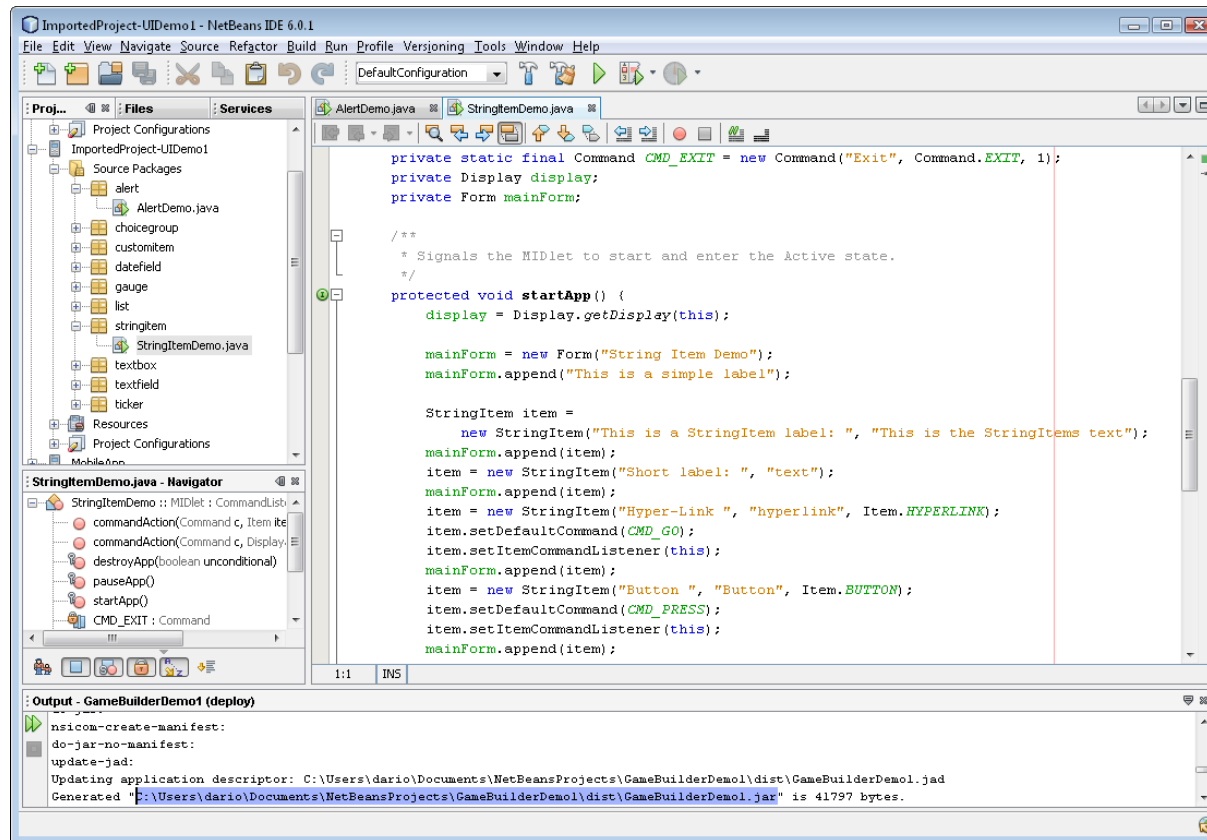
## MIDP Using the Source Editor (2)

---

- ❑ The IDE creates the \$PROJECTHOME/HelloMIDlet project folder
- ❑ The project folder contains all of your sources and project metadata, such as the project Ant script
- ❑ Right-click the MyHelloMIDlet node in the Explorer window and choose New > MIDlet
- ❑ Enter HelloMIDlet as the MIDlet name (note that "MID" is in upper case letters)
- ❑ Click Finish, the HelloMIDlet.java file is created.

# MIDP Using the Source Editor (3)

- ❑ Double click the HelloMIDlet.java file to display the source code in the Editor
- ❑ Click in the Source Editor and change the code.



## MIDP Using the Source Editor (4)

---

- ❑ Choose Run > Run Main Project (F6) from the Run menu
- ❑ Follow the progress of the project compilation in the Output window
- ❑ Note that the HelloMIDlet.java file is built before it is executed
- ❑ A device emulator opens to display the results of the executed MIDlet
- ❑ The default device emulator is DefaultColorPhone
- ❑ In the device emulator window, click on the button below the Launch command.

## Add another MIDlet

---

- ❑ Try adding the HitMIDlet (work as before)
- ❑ You must add an application description: the url to connect to
- ❑ Right click on the project and select the "properties"
- ❑ Click on "Application Descriptor"
- ❑ Add the new property "HitMIDlet.URL" with value "http://localhost:8080/midp/hits" (or whatever is the url of the servlet)
- ❑ Take care that this property is added to the JAD (only!)
- ❑ Run the new project and launch the new midlet.